

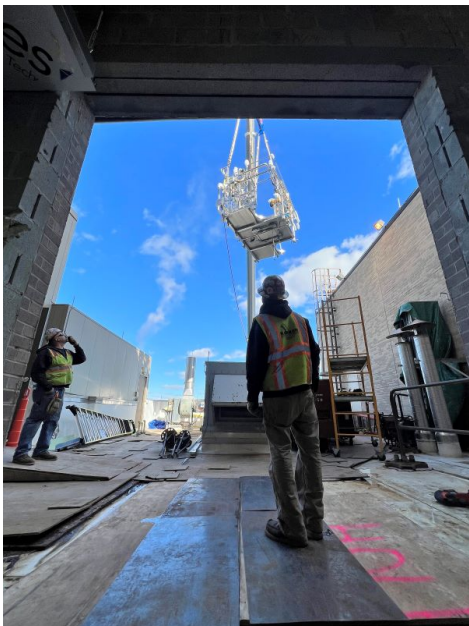


Baker Team Delivers on Two Pharma Construction Projects



R. Baker & Son recently completed two separate pharmaceuticals projects, both of which entailed receiving and storing various mechanical and process equipment in our Marlboro, NJ warehouse prior to transport, rigging, and installation. Like most other pandemic-era construction projects, however, both required innovative workarounds and radical scheduling modifications when logistical challenges inevitably arose.

Both clients originally projected that their equipment, which included custom air handlers, autoclaves, parts washers, vial fillers, and numerous process skids, would be stored at our warehouse for about 4-6 months. Little overlap was expected between the two projects, but this changed when supply chain problems and long delivery delays extended both receipt-to-installation timeframes to well over a year. Some of the sensitive equipment was stored for four seasons while we waited for associated parts and equipment to arrive, making the clean, climate-controlled warehouse environment all the more important.



Precise tracking and segregation of scores of skids, machinery, loose instruments, and small boxes for two large overlapping projects was especially critical to ensure that everything was accounted for and ready to go when needed, because just one missing carton of gaskets, hoses, or bolts could potentially be a showstopper. Project managers were notified and provided with photos each time a piece of equipment arrived to prepare for installation and modify scheduling as necessary.

R. Baker & Son worked closely with project teams and equipment vendors under challenging and highly-dynamic circumstances, and all parties rose to the occasion to deliver two successful projects.

Pictured on the left, process equipment skids are rigged to an upper story of one of the pharmaceutical facilities for assembly. Additional photos from this project can be viewed on page two.

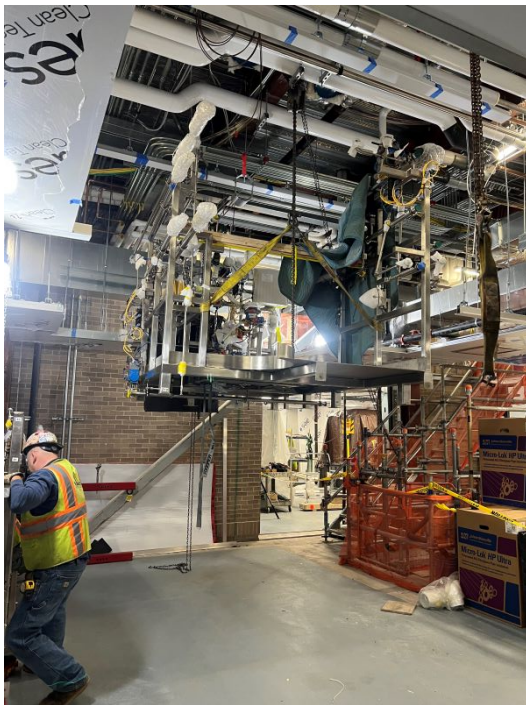


www.rbaker.com
(732) 222-3553

Also in this issue:

**To Our Amazing Team: Thank You from the Bakers
Safeguarding Against Struck-By Hazards**

Photo Gallery: Pharmaceutical Facility Construction Project



Top left: A process skid is suspended from the ceiling to allow installation of additional skids and equipment adjacent to and beneath it. Top right: Baker team members assist the vendor in preparing the complex equipment for installation. Above: The completed assembly. Middle and lower right: A forklift is used to maneuver a skid into the building at ground level.

To the R. Baker & Son Team: Thank You from the Baker Family

Last week I received a call from the plant engineer for one of our regular customers. He was particularly impressed with the R. Baker & Son crew that worked at his facility the the previous day and wanted to commend them for their outstanding performance. Even though temperatures were a sweltering 104° inside the plant, our crew adhered to all safety protocols, looked out for one another, and practiced caution on every task despite the extreme conditions. “They always work hard and they always work safe”, he said. “Working with Baker is always a pleasure.”

These kind words from a valued customer are deeply appreciated and provide a perfect opportunity to extend our heartfelt gratitude to our exceptional team for their unwavering commitment to quality and safety. That they consistently and conscientiously go above and beyond to ensure their colleagues’ well-being while earning the trust and admiration of our clients is a true testament to their integrity and reflects the values we cherish as a company.

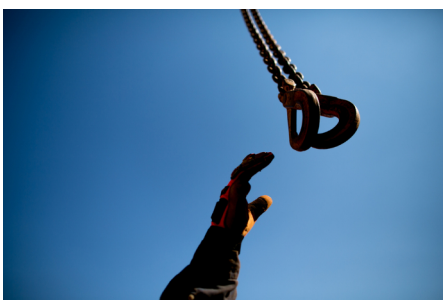
Here’s to you, Baker Team, for your unsurpassed talent and professionalism. We look forward to achieving even greater heights together in the future.



Safety Corner: Struck-By Hazards in the Construction Industry

A struck-by incident is defined by OSHA as forcible contact between a person and an object or piece of equipment. In the construction industry, struck-by incidents cause more injuries than any other hazard and are the second leading cause of fatalities behind falls.

There are four main types of struck-by hazards. **Falling objects** pose an inherent risk on construction sites where there is a possibility of tools, materials, debris, and other objects falling from varying heights. **Flying object hazards** are common when something is thrown, hurled, or propelled by power tools, or by activities like pulling, pushing, striking, grinding, and prying. **Swinging or slipping objects** cause injury when workers are struck by swinging hooks, lines, buckets, or other equipment attachments, or by loads being mechanically lifted. And finally, **same-level moving vehicles** and heavy equipment cause a significant number of construction struck-by incidents each year. R. Baker & Son is diligent in keeping personnel safe on every project. This includes:



- *Appropriate use of PPE at all times*
- *Comprehensive worker training and certification*
- *Strict observance of safe rigging techniques and crane capacities*
- *Thorough inspection of tools and equipment before each use*
- *Barricades and safety signage in hazard areas*
- *Toe boards and guardrail screens on scaffolding*
- *Debris nets, catch platforms, and canopies*